

# Windows 7 Software Installation - Quick Start Guide

This guide is the installation procedure for Windows 7, should this not be your preferred OS then you can find other guides in the Manual folder on the supplied disk.

## PC Hardware requirements

Thank you for purchasing and using **GTrek**, in order to use the **GTrek** software your PC should comply with the minimum hardware description below.

PC Requirements	
Minimum Requirements	Recommended Requirements
Windows XP, Vista or Win 7	Windows XP, Vista or Win 7
Pentium 4, 1Ghz	Pentium 4, 2.4Ghz or AMD 2400xp+
512MB RAM (1MB for Vista or Win 7)	1GB RAM for XP, 2GB RAM for Vista or Win 7
100MB Disk space	500MB Disk space
3D Compatible video card	Internet access, DSL 512MB (For Google Earth/Maps only)
1024,768 16 bit colour display	3D Compatible video card, Direct X v9.C
	1200x800 (or bigger) 24 bit colour display

Your **GTrek II** kit will contain the following:-

- |   |                                   |   |  |
|---|-----------------------------------|---|--|
| 1 | <b>GTrek II</b> GPS data logger   | 2 | USB to mini-USB cable                        |
| 3 | DC car cigarette lighter adapter  | 4 | Li-ion rechargeable battery                  |
| 5 | Installation CD                   | 6 | Quick Start guide                            |
| 7 | Universal main charger (optional) | 8 | Spare Li-ion rechargeable battery (optional) |

## Install software prior to connecting your GTrek

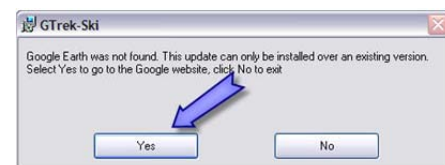
Prior to connecting your **GTrek** to your PC you are required to install the application software and device drivers.

The installation is a simple automated process and should proceed as follows:-

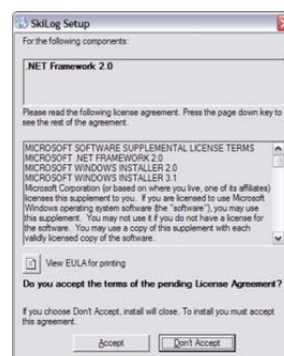
1. Inserting the installation disk into your CD-ROM drive the installation program should run automatically. If not, open "My Computer" and double click **startUp.exe** on the installation CD.
2. Google Earth is a required component for the **GTrek** application, If already installed this step will be skipped. If it's not found this dialog box will be displayed. Clicking Yes will open the Google Earth webpage where the "**Download Google Earth**" button should be clicked to download the free version. A connection to the internet is required. Follow the instructions provided. Once complete restart this installation procedure.
3. **GTrek** requires a Microsoft system extension called ".Net Framework 2.0" and needs to be installed and may take a couple of minutes to complete. Click **Accept** and the installation will proceed. ".Net" may already be installed, if so this step will be skipped.
4. The Welcome Screen is displayed next, click **Next** to continue
5. The **GTrek End User License Agreement** is displayed next and the user needs to click **I Agree** and **Next** to continue.
6. **GTrek** is normally installed in the default folder, it can be changed if necessary, the default folder is recommended. Click **Next** to continue.



Step 1



Step 2



Step 3



Step 4



Step 5

7. Confirm Installation, Click **Next** to continue.
8. **GTrek** will now commence the installation. A progress bar will be displayed.
9. The last items to be installed are the device drivers, once completed a notification (step 9) will be displayed.
10. The next step is to assign the desk top icon for the selected **GTrek** version. Click the selected radio button either Ski, Bike or Track. To enable a hot-key combination check the box and select a key combination and click OK.
11. The last step is to configure the device drivers. Insert the battery into your **GTrek** aligning the battery terminals with the contacts, replace the cover, connect your **GTrek** to the PC with the mini USB cable supplied and set the power switch to LOG.
12. A message will be displayed stating that New Hardware has been detected and that is being installed
13. The installation process will start by searching for the information required, when found, the drivers will be installed.
14. When the installation has finished click **Close** to complete the task. That concludes the installation and the CD can be removed. Now run the **GTrek** application with the **GTrek** still connected and switched on to complete the configuration process. If this is not done now then some featured may not be available until it is done.



Step 6



Step 7



Step 8

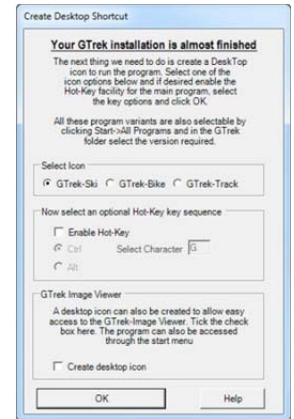


Step 9

11. The last step is to configure the device drivers. Insert the battery into your **GTrek** aligning the battery terminals with the contacts, replace the cover, connect your **GTrek** to the PC with the mini USB cable supplied and set the power switch to LOG.
12. A message will be displayed stating that New Hardware has been detected and that is being installed
13. The installation process will start by searching for the information required, when found, the drivers will be installed.

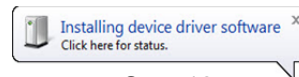


Step 11

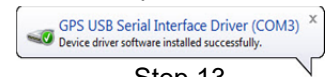


Step 10

14. When the installation has finished click **Close** to complete the task. That concludes the installation and the CD can be removed. Now run the **GTrek** application with the **GTrek** still connected and switched on to complete the configuration process. If this is not done now then some featured may not be available until it is done.

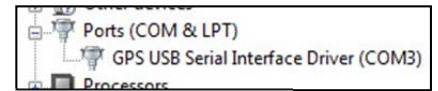


Step 12



Step 13

15. You can verify the correct driver installation by opening Device Manager and under the Ports (COM & LPT) section should be GPS USB Serial Interface Driver (COMx).



Step 15 & 16

16. To open the Device Manager click Start, right click Computer and select Properties. On the next screen select Device Manager.

It is recommended that prior to first use, your **GTrek** be configured and initialised. Switch on your **GTrek** and allow it to synchronise with the satellites. Launch the **GTrek** application by double clicking the icon. From the Settings menu select Configure **GTrek**, select the required logging rate and click **Save**. Your **GTrek** will be configured for use and the on-board memory will be cleared.



You will also see an Identification dialog box where your serial number is displayed where you can enter a user name (recommended).

The battery should be fully charged before use, the green light will go out or start to flicker to indicate the charging process is complete. Your **GTrek** is now ready to go. Use your **GTrek** and get familiar with it before you get to the slopes or hills or just about anywhere else.

For more information on installation and usage please refer to the **GTrek** manual on the installation CD.

For PCs that do not have a CD Drive or a CD Drive suitable for 8cm disks, copy the entire contents (approximately 170MB) to a memory stick on another PC and install from here, just double click **startup** to start the installation. If this is not possible you can request a full size disk.

If the charge in the **GTrek** battery becomes very low then recharge before attempting to clear or initialize the on-board memory. If your **GTrek** is stored for long periods of non-use then remove the battery and store in a cool dry place. Recharge every 3 to 4 months. Do not allow the contacts to get damp or let the battery become completely discharged as recharging may not be possible. If the battery in the **GTrek** becomes fully discharged it may not be possible to recharge it.